

PROBA ACCESO 1ºGP 2023 - LECTURA RÍTMICA 1

Musical score for rhythmic reading exercise 1. The score is written in treble and bass clefs, with a key signature of one flat (Bb). It consists of five staves of music. The first staff starts with a tempo marking of $\text{♩} = 60$ and a 3/4 time signature. The second staff is marked "5 (a 1 tiempo)" and has a 3/8 time signature. The third staff starts at measure 10, has a tempo marking of $\text{♩} = \text{♩}$, and a 2/4 time signature. The fourth staff starts at measure 18, has a tempo marking of $\text{♩} = \text{♩}$, and a 6/8 time signature. The fifth staff starts at measure 22, has a tempo marking of $\text{♩} = \text{♩}$, and a 6/8 time signature. The score includes various rhythmic patterns, including eighth and sixteenth notes, rests, and slurs. There are also some accidentals (sharps and naturals) and dynamic markings (accents).

PROBA ACCESO 1ºGP 2023 - ENTOACIÓN 1

Musical score for intonation exercise 1. The score is written in treble clef, with a key signature of two sharps (F# and C#) and a 3/4 time signature. It consists of four staves of music. The first staff starts with a whole rest. The second staff starts at measure 7. The third staff starts at measure 13. The fourth staff starts at measure 19. The score includes various rhythmic patterns, including eighth and sixteenth notes, and slurs. There are also some accidentals (sharps and naturals).

PROBA ACCESO 1ºGP 2023 - LECTURA RÍTMICA 2

Musical score for rhythmic reading exercise 2. The score is written in treble and bass clefs, with a key signature of one sharp (F#). It consists of five staves of music. The first staff starts with a tempo marking of $\text{♩} = 60$ and a 3/4 time signature. The second staff is marked "(a 1 tiempo)" and has a 3/8 time signature. The third staff has a tempo marking of $\text{♩} = \text{♩}$ and a 2/4 time signature. The fourth staff has a tempo marking of $\text{♩} = \text{♩}$ and a 6/8 time signature. The fifth staff has a tempo marking of $\text{♩} = \text{♩}$ and a 6/8 time signature. The score includes various rhythmic patterns, including eighth notes, quarter notes, and triplets, with some notes marked with accents.

PROBA ACCESO 1ºGP 2023 - ENTOACIÓN 2

Musical score for intonation exercise 2. The score is written in treble clef, with a key signature of two flats (Bb, Eb) and a 3/4 time signature. It consists of four staves of music. The first staff starts with a whole rest followed by a half note G4, a quarter note A4, and a quarter note Bb4. The second staff starts with a quarter note C5, a quarter note D5, a quarter note Eb5, and a quarter note E5. The third staff starts with a quarter note F5, a quarter note G5, a quarter note Ab5, and a quarter note Bb5. The fourth staff starts with a quarter note C6, a quarter note D6, a quarter note Eb6, and a quarter note E6. The score includes various rhythmic patterns, including eighth notes, quarter notes, and half notes, with some notes marked with accents.

PROBA ACCESO 1ºGP 2023 - DITADO 1

Musical notation for Dictation 1, consisting of two staves. The first staff begins with a treble clef, a key signature of one flat (B-flat), and a 6/8 time signature. The melody consists of eighth and quarter notes. A slur with a '2' above it covers the final two notes of the first staff. The second staff starts with a '5' above the first note, indicating a fifth measure continuation. It continues with eighth and quarter notes, ending with a double bar line.

PROBA ACCESO 1ºGP 2023 - DITADO 2

Musical notation for Dictation 2, consisting of two staves. The first staff begins with a treble clef, a key signature of two sharps (D major), and a 6/8 time signature. The melody consists of eighth and quarter notes. A slur with a '2' above it covers the final two notes of the first staff. The second staff starts with a '5' above the first note, indicating a fifth measure continuation. It continues with eighth and quarter notes, ending with a double bar line.

PROBA ACCESO 1ºGP 2023 - TEORÍA

Alumno/a _____ Instrumento _____

1. Clasifica o número e especie dos seguintes intervalos (1 punto – 0,25 cada inversión)



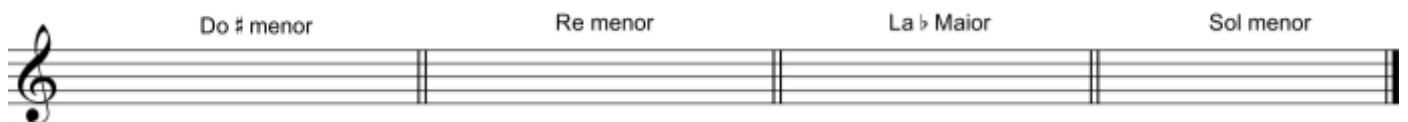
2. Inverte os intervalos do exercicio anterior e indica número e especie da inversión (1 punto – 0,25 cada inversión)



3. Indica as tonalidades **Maior e menor** que corresponden a cada armadura (1'5 puntos – 0,5 cada armadura)



4. Escribe a armadura correspondente (1 punto – 0,25 cada armadura)



5. Escribe o nome e o tipo de cada escala, por exemplo Do menor-Natural ou 1ºTipo (1 punto – 0,5 cada escala)



6. Escribe as escalas que se indican (1 punto – 0,5 cada escala)



7. Clasifica os seguintes acordes segundo o seu tipo: **PM, Pm, 5ªA ou 5ªD** (1 punto – 0,25 cada acorde)



8. Forma os acordes tríade que se indican a partir da fundamental dada (1 punto – 0,25 cada acorde)



9. Indica na partitura seguinte os aspectos de cada apartado: (1'5 puntos: 0,25+0,25+0,5+0,5)

- Tonalidade.
- Divide o fragmento en dúas semifrases indicando na partitura con ligaduras ou letras.
- Cadencia nos compases 3-4 e nos compases 7-8. Para isto precisas indicar os grados.
- Distingue entre os Floreos (F), as Notas de paso (P) e as Apoiaturas (A) que teñen un círculo na partitura.

Danza Checa (B.Smetana)
 Adaptación Dpto LM

Grados da cadencia: _ _ _

Cadencia: _____

4

Grados da cadencia: _ _ _

Cadencia: _____